

Concordance of 30-Day Mortality and In-Hospital Mortality or Hospice Discharge after Sepsis

Results from 37,200 patients hospitalized with community-onset sepsis at 67 Michigan hospitals (November 2020-July 2024)

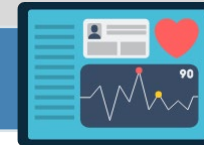
Patient Outcomes

Rate	Outcome
11.6% (n=4,331)	Died in-hospital
7.5% (n=2,805)	Discharged to hospice
21.7% (n=8,059)	Discharged to post-acute care facility
19.3% (n=7,167)	Died within 30-days of admission



Hospice Outcomes

Rate	Outcome
64.8% (n=1,818)	Died within 30 days
9.8% (n=276)	Died within 31-90 days
25.3% (n=711)	Remained alive through day 90



Concordance and Correlation

- **92.0%** (n=34,232) were concordantly classified by 30-day and in-hospital mortality (kappa=0.698).
- **94.3%** (n=35,063) were concordantly classified by 30-day mortality and the composite outcome (kappa=0.815).

The composite outcome showed high concordance with 30-day mortality and could serve as a real-time, less biased measure for national benchmarking of sepsis outcomes.