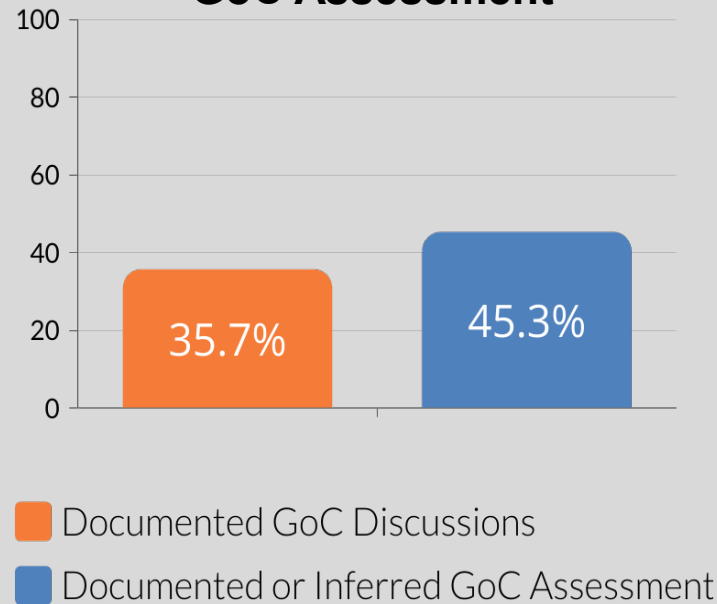


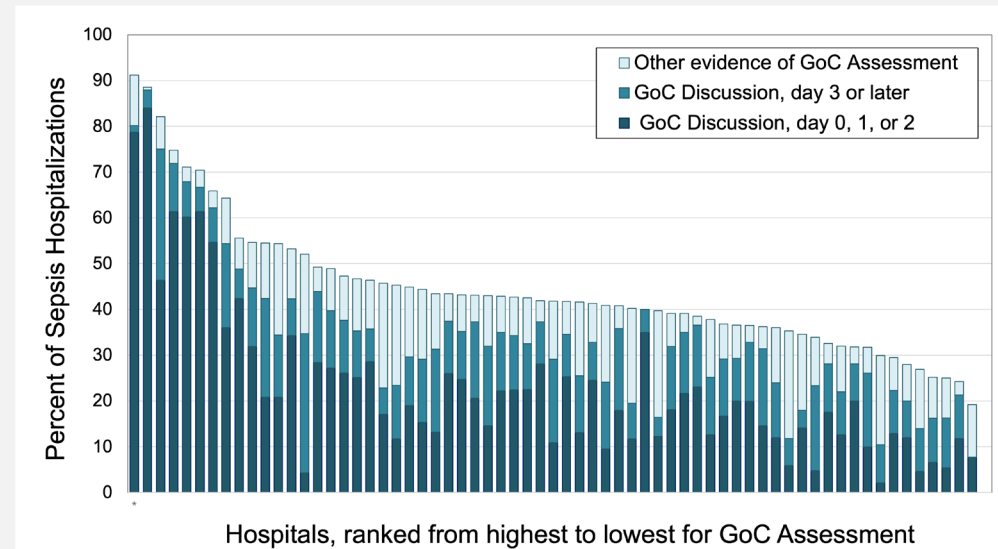
# Goals of care (GoC) assessment during hospitalization for sepsis

Results from adult patients hospitalized with community-onset sepsis at 66 Michigan hospitals from 2020-2023 (N=18,771)


## Frequency of GoC Assessment



## Significant Variation in Practice of GoC Assessment Across Hospitals



## Factors Associated with GoC Assessment

- Age
  - Race
  - Chronic conditions
  - Pre-existing cognitive or functional limitations
  - Admission to intensive care
  - Receipt of life support
- 

Patients did not consistently receive GoC assessments, indicating a need for improvement in practice.



Blue Cross  
Blue Shield  
Blue Care Network  
of Michigan

Cagino, L, et al. *Annals ATS*. 2025.



Nonprofit corporations and independent licensees  
of the Blue Cross and Blue Shield Association